

# CHICAGO FAMILY HEALTH CENTER PULLMAN FACILITY REPLACEMENT

556-580 E. 115th STREET  
CHICAGO, ILLINOIS 60628

**SMNG-A**  
Schnieder Muehle Niermer-Garde-Auskaitis Architects Ltd.

ADDRESS: 998 W. HURON STREET  
CHICAGO, ILLINOIS 60642  
PHONE: 312.829.3385  
FAX: 312.829.8187

**TERRA ENGINEERING, LTD.**  
Chicago, IL  
Civil Engineers of Record

**McKAY LANDSCAPE ARCHITECTS**  
Chicago, IL  
Landscape Architects of Record

**MATRIX ENGINEERING**  
Chicago, IL  
Structural Engineers of Record

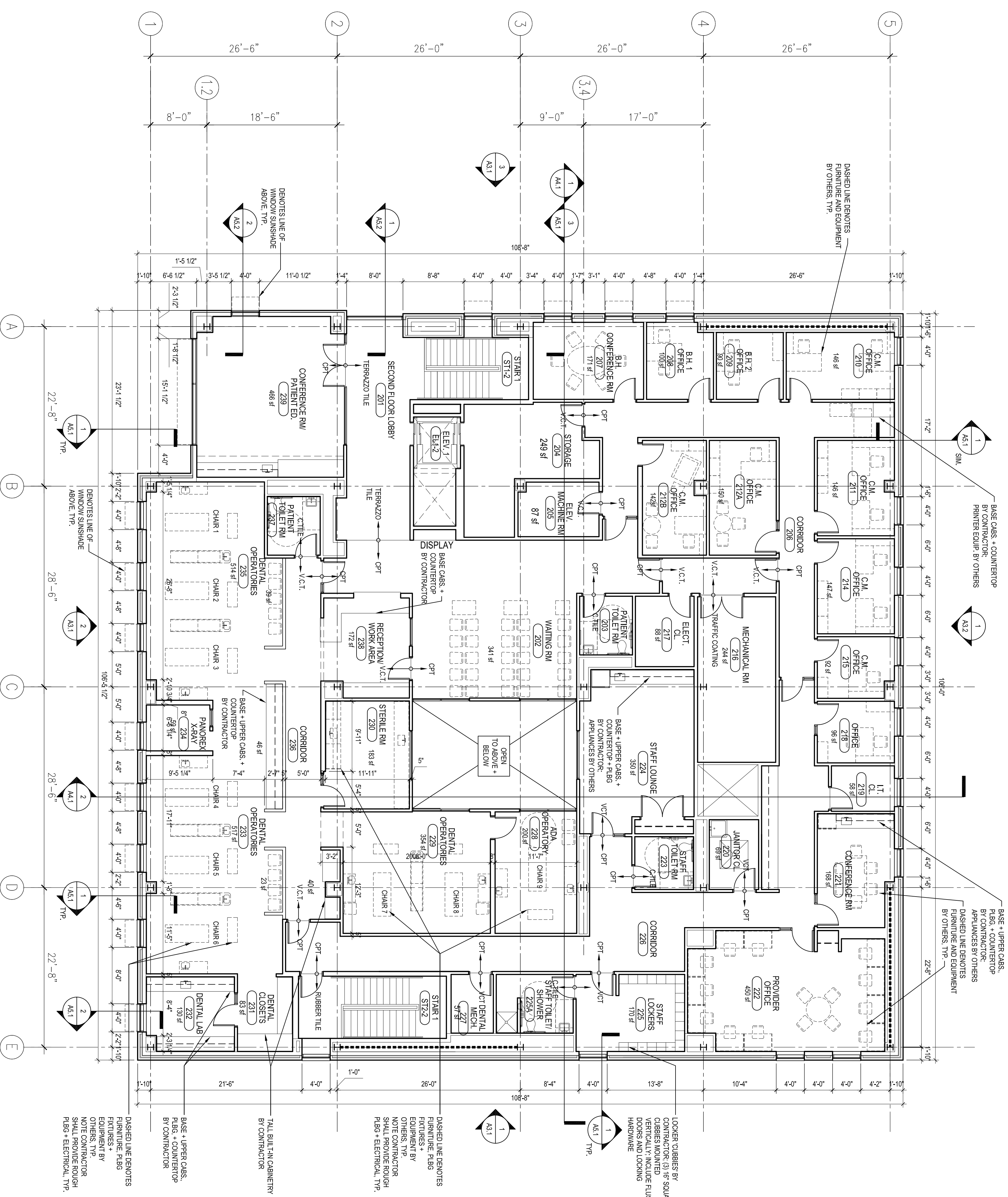
**HENNEMAN ENGINEERING, INC.**  
Chicago, IL  
MEPP Engineers of Record

Issuance	Mark	Description	Date
Issue for CD Estimate	10.31.11		

SMNG-A Project No.: 1108

**SECOND FLOOR PLAN**

Sheet



**1 SECOND FLOOR PLAN**  
SCALE: 1/8" = 1'-0"  
North arrow pointing up.