

CHICAGO FAMILY HEALTH CENTER PULLMAN FACILITY REPLACEMENT

556-580 E. 115th STREET
CHICAGO, ILLINOIS 60628

SMNG-A
Schnieder Muehle Niermer-Garde-Auskaitis
Architects Ltd.

ADDRESS: 998 W. HURON STREET
CHICAGO, ILLINOIS 60642
PHONE: 312.829.3385
FAX: 312.829.8187

TERRA ENGINEERING, LTD.
Civil Engineers of Record

McKAY LANDSCAPE ARCHITECTS
Landscape Architects of Record

MATRIX ENGINEERING
Civil Engineers of Record

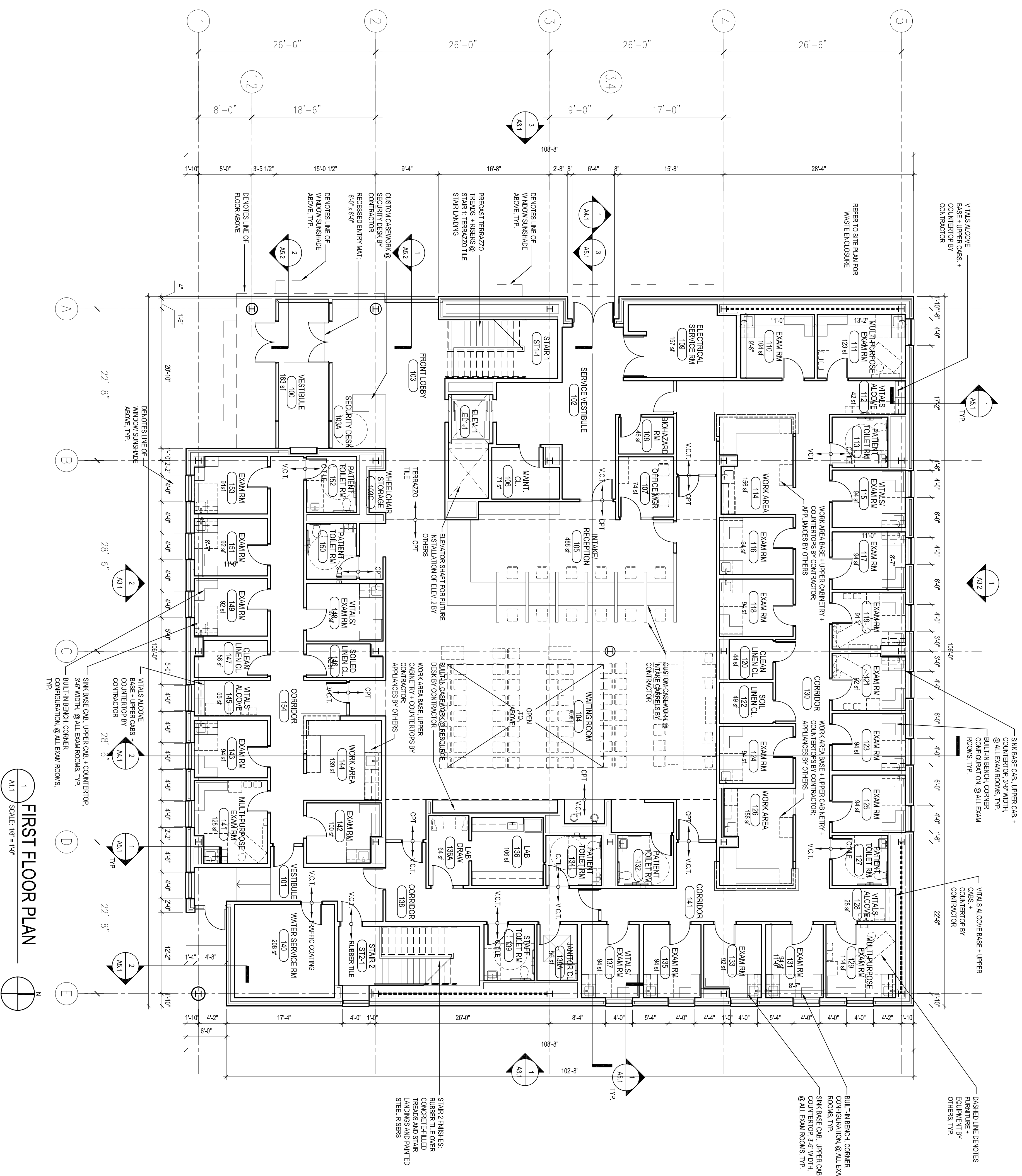
HENNEMAN ENGINEERING, INC.
MEPEP Engineers of Record

SMNG-A Project No.: 1108

FIRST FLOOR PLAN

Sheet

A1.1



1 FIRST FLOOR PLAN
SCALE: 1/8" = 1'-0"